

D4 DZUS® Standard Line Quarter-Turn Fasteners

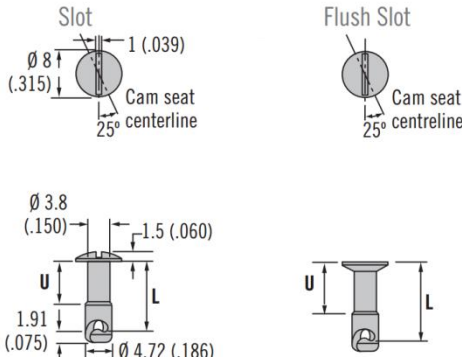
Stud selection - Size 3



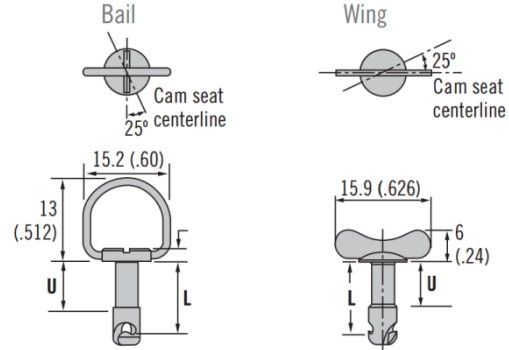
Material

- Steel, zinc plated or stainless steel

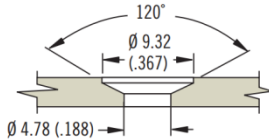
H Head Styles - Tool Actuated



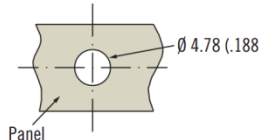
H Head Styles - Hand Actuated



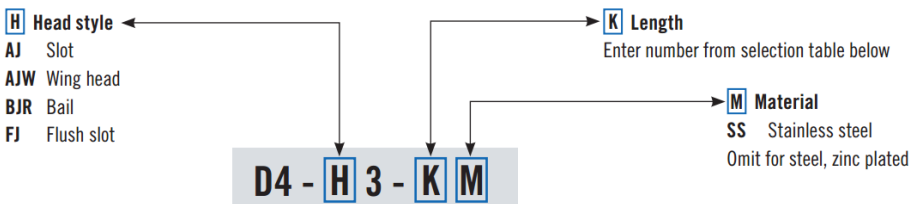
Flush



Standard



Stud Length Table										
A				B				K	U	L
TMT Range For: Rivet-On Receptacle D4-S3-175		TMT Range For: Rivet-On Receptacle D4-S3-150		TMT Range For: Weld-On Receptacle D4-X735-205		TMT Range For: Weld-On Receptacle D4-X735-180				
Min.	Max.	Min.	Max.	Min.	Max.	Min.	Max.			
2.41 (.095)	3.02 (.119)	3.05 (.12)	3.66 (.144)	1.65 (.065)	2.26 (.089)	2.29 (.09)	2.9 (.114)	25	1.91 (.075)	6.35 (.250)
3.68 (.145)	4.29 (.169)	4.32 (.17)	4.93 (.194)	2.92 (.115)	3.53 (.139)	3.56 (.14)	4.17 (.164)	30	2.54 (.100)	7.62 (.300)
4.95 (.195)	5.56 (.219)	5.59 (.22)	6.2 (.244)	4.19 (.165)	4.8 (.189)	4.83 (.19)	5.44 (.214)	35	3.81 (.150)	8.89 (.350)
6.22 (.245)	6.83 (.269)	6.86 (.27)	7.47 (.294)	5.46 (.215)	6.07 (.239)	6.1 (.24)	6.71 (.264)	40	5.08 (.200)	10.16 (.400)
7.49 (.295)	8.1 (.319)	8.13 (.32)	8.74 (.344)	6.73 (.265)	7.34 (.289)	7.37 (.29)	7.98 (.314)	45	5.77 (.225)	11.43 (.450)
8.76 (.345)	9.37 (.369)	9.4 (.37)	10.01 (.394)	8.00 (.315)	8.61 (.339)	8.64 (.34)	9.25 (.364)	50	6.35 (.250)	12.70 (.500)
10.03 (.395)	10.64 (.419)	10.67 (.42)	11.28 (.444)	9.27 (.365)	9.88 (.389)	9.91 (.39)	10.52 (.414)	55	6.99 (.275)	13.97 (.550)
11.3 (.445)	11.91 (.469)	11.94 (.47)	12.55 (.494)	10.54 (.415)	11.15 (.439)	11.18 (.44)	11.79 (.464)	60	7.62 (.300)	15.24 (.600)
12.57 (.495)	13.18 (.519)	13.21 (.52)	13.82 (.544)	11.81 (.465)	12.42 (.489)	12.45 (.49)	13.06 (.514)	65	8.89 (.350)	16.51 (.650)
13.84 (.545)	14.45 (.569)	14.48 (.57)	15.09 (.594)	13.08 (.515)	13.69 (.539)	13.72 (.54)	14.33 (.564)	70		17.78 (.700)
15.11 (.595)	15.72 (.619)	15.75 (.62)	16.36 (.644)	14.35 (.565)	14.96 (.589)	14.99 (.59)	15.6 (.614)	75	9.5 (.375)	19.05 (.750)
16.38 (.645)	16.99 (.669)	17.02 (.67)	17.63 (.694)	15.62 (.615)	16.23 (.639)	16.26 (.64)	16.87 (.664)	80	10.16 (.400)	20.32 (.800)



Notes

- Stainless steel material may require a higher minimum order quantity

To select correct fastener:

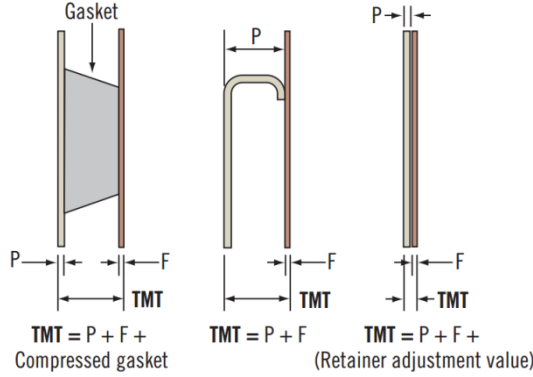
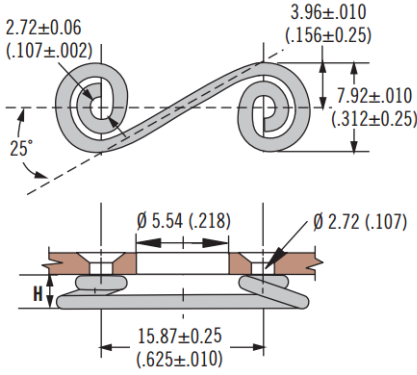
- Select receptacle**
 - Choose a receptacle from D4 DZUS® Standard Line Quarter-Turn Fasteners range
- Select retainer and accessories**
 - Choose from D4 DZUS® Standard Line Quarter-Turn Fasteners range and note any adjustment value
- Specify stud length**
 - Calculate the total material thickness (TMT) using the formula given for the selected receptacle
 - Find the range of TMT using the stud length selection table (left) using the column (A or B) given for the selected receptacle, find **K**
- Complete the stud part number**
 - By specifying the head style **H**, stud length **K**, and material **M**
 - Example:
 - For rivet-on with base receptacle D4-S3-175, use column A
 - For TMT value calculated as 5.2, K = 35
 - For slotted head style in steel material, completed part number: D4-AJ3-35

D4 DZUS® Standard Line Quarter-Turn Fasteners

Receptacles - Size 3



Rivet-On

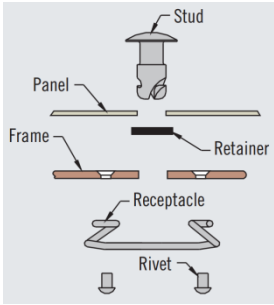


Material

- Steel, zinc plated or stainless steel

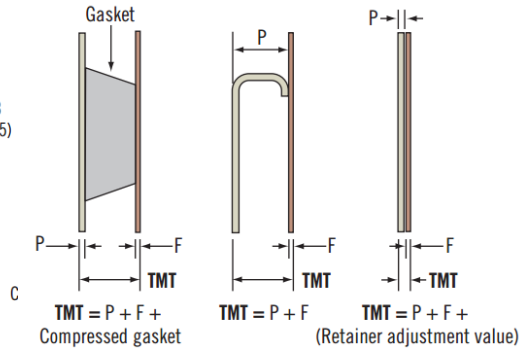
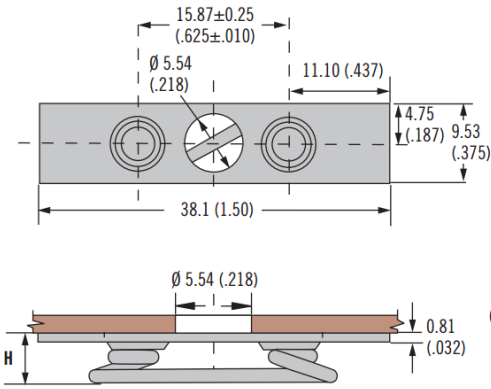
Notes

- Utilize stud selection column indicated when choosing a stud length from the D4 DZUS® Standard Line Quarter-Turn Fasteners stud length table. Contact Gripwell for stud length table.



Part Number		H±0.25(.010)	Stud Selection Column
Steel	Stainless Steel		
D4-S3-150	D4-S3-150SS	3.81 (.150)	A
D4-S3-175	D4-S3-175SS	4.45 (.175)	

Weld-On

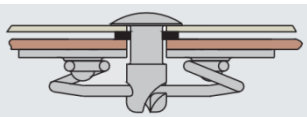


Material

- Steel, zinc plated

Notes

- Utilize stud selection column indicated when choosing a stud length from the D4 DZUS® Standard Line Quarter-Turn Fasteners stud length table. Contact Gripwell for stud length table.



Part Number	H	Stud Selection Column
D4-X735-180	4.57 (.180)	B
D4-X735-205	5.21 (.205)	

We are proud to be Southco's authorized distributor of over 20 years

D4 DZUS® Standard Line Quarter-Turn Fasteners

Retainers - Size 3, 4, 5 and 6



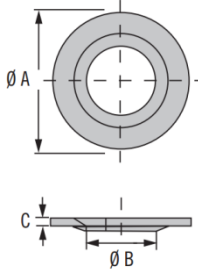
Material

- Retaining ring: Steel, zinc plated
- Retaining spring: Stainless steel
- Retainer GH: Aluminum, natural
- Retainer GP, natural: HD Polythene
- Retainer GP, black: Polypropylene

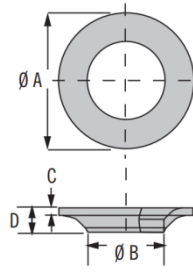
Installation Notes

1. Place the retainer on the mandrel as shown
2. Align ring or spring ends so that they will miss the stud cam
3. Place mandrel in end of stud cam
4. Place tool over mandrel
5. Push retainer until it is sealed in stud undercut

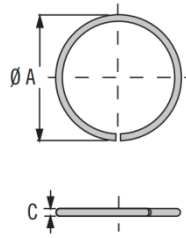
Retainer GP



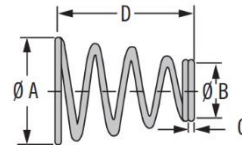
Retainer GH



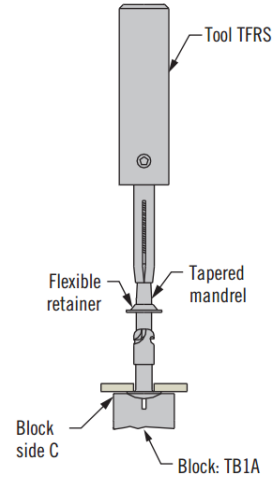
Retaining Ring



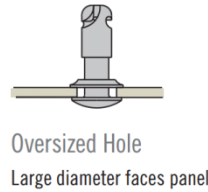
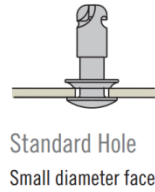
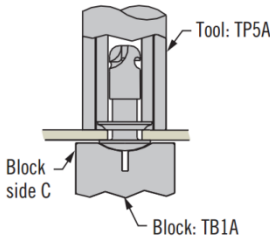
Retaining Spring



Install Retainer GP, Retaining Ring and SX



Install Retainer GH



Size	Type	Part Number	Ø A	Ø B	C	D	Adjustment Value	Installation Tool Part Number
3	Retainer GP, natural	D4-GP3	7.9 (.311)	4.06 (.160)	0.5 (.020)	N/A	Add 0.51 (.020)	29-TFRS3 and 29-TB1A3
	Retainer GP, black	D4-GP3B						
	Retainer GH	D4-GH3	4.8 (.188)	0.38 (.015)	1.3 (.051)	Add 0.38 (.015)	29-TFRS3 and 29-TB1A3	
	Retaining ring	D4-RR3	5.3 (.209)	N/A	0.56 (.022)	N/A		Add 0.56 (.022)
	Retaining spring	D4-SX520	7.9 (.311)	3.8 (.149)	0.46 (.018)	17.5 (.689)		Add 0.91 (.036)
4	Retainer GP, natural	D4-GP4	11.1 (.437)	5.4 (.21)	0.7 (.028)	N/A	Add 0.7 (.028)	29-TFRS4 and 29-TB1A4
	Retainer GP, black	D4-GP4B						
	Retainer GH	D4-GH4	6.35 (.250)	0.64 (.025)	2.1 (.083)	Add 0.64 (.025)	29-TFRS4 and 29-TB1A4	
	Retaining ring	D4-RR4	7.1 (.280)	N/A	0.71 (.028)	N/A		Add 0.74 (.029)
	Retaining spring	D4-SX523	11.1 (.437)	5.1 (.200)	0.64 (.025)	17.5 (.689)		Add 1.28 (.050)
5	Retainer GP, natural	D4-GP5	14.3 (.562)	6.5 (.256)	0.83 (.033)	N/A	Add 0.86 (.034)	29-TFRS5 and 29-TB1A5
	Retainer GP, black	D4-GP5B						
	Retainer GH	D4-GH5	7.9 (.311)	0.88 (.035)	2.7 (.106)	Add 0.78 (.031)	29-TFRS5 and 29-TB1A5	
	Retaining ring	D4-RR5	8.92 (.351)	N/A	0.91 (.036)	N/A		Add 0.91 (.035)
	Retaining spring	D4-SX510	14.3 (.562)	6.5 (.256)	0.82 (.032)	19 (.748)		Add 1.64 (.064)
6	Retainer GH	D4-GH6	15.9 (.625)	9.5 (.374)	0.88 (.035)	2.9 (.114)	Add .88 (.035)	29-TFRS6 and 29-TB1A6
	Retaining ring	D4-RR6	10.78 (.424)	N/A	1.14 (.045)	N/A	Add 1.14 (.045)	
	Retaining spring	D4-SX518	15.9 (.625)	8 (.315)	0.88 (.035)	19 (.748)	Add 1.76 (.070)	

Tooling Notes

- **29 - TFRS hand tool:** Spreads the inside diameter of retainers over stud shanks and then pushes them into stud undercuts
- **29 - TB1A block:** Nests stud heads during installation. (Any flat block may be used for BJR bail head studs).

D4 DZUS® Standard Line Quarter-Turn Fasteners

Retainers - Size 3, 4, 5 and 6



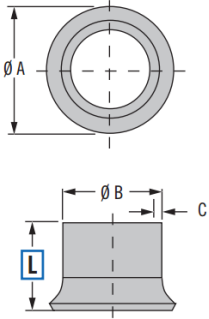
Material

- Retainer GA: Aluminum, natural

Installation Notes

1. Insert retainer in panel hole
2. Set retainer
3. Insert stud
4. Flatten retainer

Retainer GA

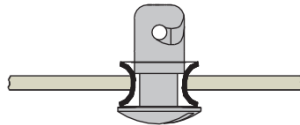


Installation Retainer GA

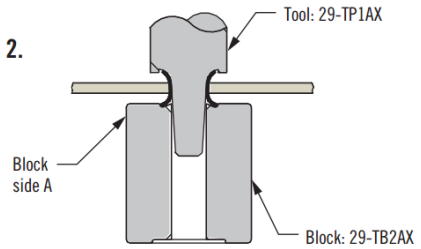
1.



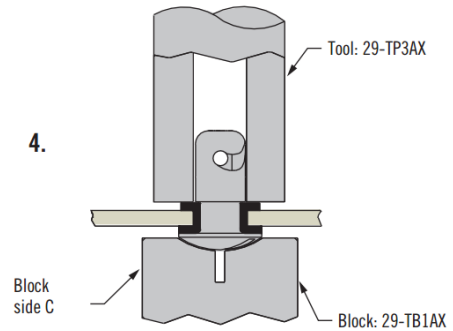
3.



2.



4.



Size	Panel Thickness	L	Part Number	Ø A	Ø B	C	Adjustment Formula	Installation Tool Part Number
3	0.38 - 0.64 (.015 - .025)	4.45 (.175)	D4-GA3-175	Ø 7.9 (.311)	5.6 (.220)	0.38 (.015)	Add 0.38 (.015)	29-TP1A3, 29-TP3A3, 29-TB1A3 and 29-TB2A3 (all required)
	0.66 - 1.27 (.026 - .050)	5.08 (.200)	D4-GA3-200					
	1.29 - 2.38 (.051 - .094)	6.35 (.250)	D4-GA3-250					
4	0.38 - 0.64 (.015 - .025)	4.45 (.175)	D4-GA4-175	10.3 (.405)	7.9 (.311)	1.28 (.050)	Add 1.28 (.050)	29-TP1A4, 29-TP3A4 and 29-TB1A4 (all required)
	0.66 - 1.27 (.026 - .050)	5.08 (.200)	D4-GA4-200					
	1.29 - 2.38 (.051 - .094)	6.35 (.250)	D4-GA4-250					
5	0.38 - 0.64 (.015 - .025)	4.45 (.175)	D4-GA5-175	12.7 (.500)	9.5 (.374)	1.42 (.056)	Add 1.42 (.056)	29-TP1A5, 29-TP3A5, 29-TB1A5 and 29-TB2A5 (all required)
	0.66 - 1.27 (.026 - .050)	5.08 (.200)	D4-GA5-200					
	1.29 - 2.38 (.051 - .094)	6.35 (.250)	D4-GA5-250					
6	0.38 - 0.64 (.015 - .025)	4.45 (.175)	D4-GA6-175	15.1 (.594)	11.1 (.437)	1.42 (.056)	Add 1.42 (.056)	29-TP1A6, 29-TP3A6, 29-TB1A6 and 29-TB2A6 (all required)
	0.66 - 1.27 (.026 - .050)	5.08 (.200)	D4-GA6-200					
	1.29 - 2.38 (.051 - .094)	6.35 (.250)	D4-GA6-250					

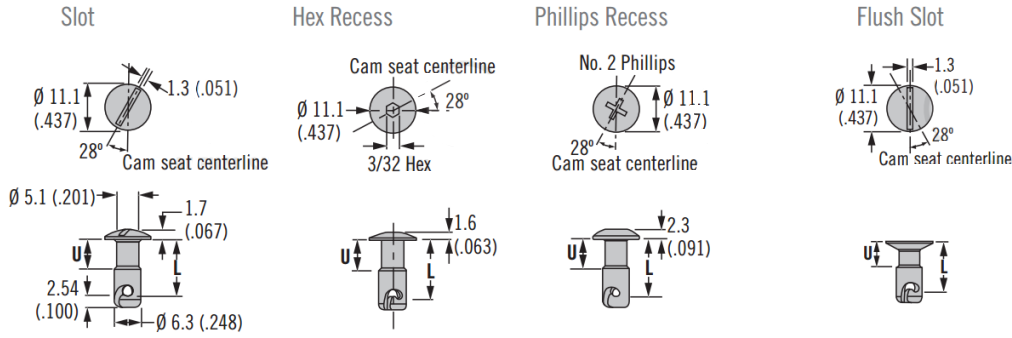
D4 DZUS® Standard Line Quarter-Turn Fasteners

Stud selection - Size 4

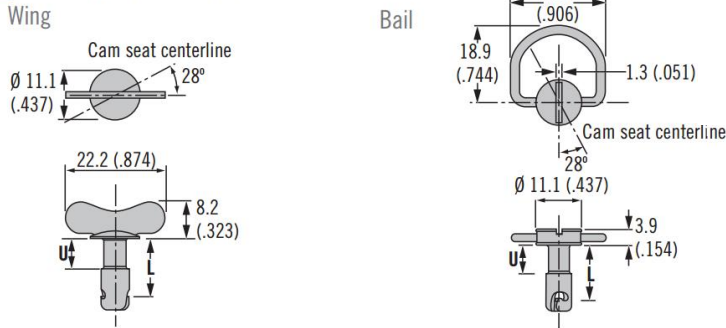
Material

- Steel, zinc plated or stainless steel

H Head Styles - Tool Actuated



H Head Styles - Hand Actuated

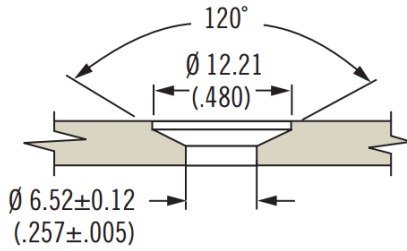


To select correct fastener:

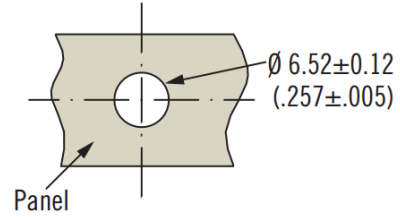
- Select receptacle**
 - Choose a receptacle from D4 DZUS® Standard Line Quarter-Turn Fasteners range
- Select retainer and accessories**
 - Choose from D4 DZUS® Standard Line Quarter-Turn Fasteners range and note any adjustment value
- Specify stud length**
 - Calculate the total material thickness (TMT) using the formula given for the selected receptacle
 - Find the range of TMT using the stud length selection table (left, and next page) using the column (A, B, C or D) given for the selected receptacle, find **K**
- Complete the stud part number**
 - By specifying the head style **H**, stud length **K**, and material **M**
 - Example:
 - For rivet-on with base receptacle D4-S4-225, use column A
 - For TMT value calculated as 5.2, K = 40
 - For slotted head style in steel material, completed part number: D4-AJ4-40

Stud Length Table										
A				B				K	U	L
TMT Range For: Rivet-On Receptacle D4-S4-225		TMT Range For: Rivet-On Receptacle D4-S4-200		TMT Range For: Weld-On Receptacle D4-X485-300		TMT Range For: Weld-On Receptacle D4-X485-275				
Min.	Max.	Min.	Max.	Min.	Max.	Min.	Max.			
1.27 (.050)	1.88 (.074)	1.91 (.075)	2.51 (.099)	~	~	~	~	25	1.91 (.075)	6.35 (.250)
2.54 (.100)	3.15 (.124)	3.18 (.125)	3.78 (.149)	0.64 (.025)	1.24 (.049)	1.27 (.050)	1.88 (.074)	30	2.54 (.100)	7.62 (.300)
3.81 (.150)	4.42 (.174)	4.45 (.175)	5.05 (.199)	1.91 (.075)	2.51 (.099)	2.54 (.100)	3.15 (.124)	35	3.81 (.150)	8.89 (.350)
5.08 (.200)	5.69 (.224)	5.72 (.225)	6.32 (.249)	3.18 (.125)	3.78 (.149)	3.81 (.150)	4.42 (.174)	40	5.08 (.200)	10.16 (.400)
6.35 (.250)	6.96 (.274)	6.99 (.275)	7.59 (.299)	4.45 (.175)	5.05 (.199)	5.08 (.200)	5.69 (.224)	45	5.72 (.225)	11.43 (.450)
7.62 (.300)	8.23 (.324)	8.26 (.325)	8.86 (.349)	5.72 (.225)	6.32 (.249)	6.35 (.250)	6.96 (.274)	50	6.35 (.250)	12.70 (.500)
8.89 (.350)	9.50 (.374)	9.53 (.375)	10.13 (.399)	6.99 (.275)	7.59 (.299)	7.62 (.300)	8.23 (.324)	55	6.99 (.275)	13.97 (.550)
10.16 (.400)	10.77 (.424)	10.80 (.425)	11.40 (.449)	8.26 (.325)	8.86 (.349)	8.89 (.350)	9.50 (.374)	60	7.62 (.300)	15.24 (.600)
11.43 (.450)	12.04 (.474)	12.07 (.475)	12.67 (.499)	9.53 (.375)	10.13 (.399)	10.16 (.400)	10.77 (.424)	65	8.89 (.350)	16.51 (.650)
12.70 (.500)	13.31 (.524)	13.34 (.525)	13.94 (.549)	10.80 (.425)	11.40 (.449)	11.43 (.450)	12.04 (.474)	70		17.78 (.700)
13.97 (.550)	14.58 (.574)	14.61 (.575)	15.21 (.599)	12.07 (.475)	12.67 (.499)	12.70 (.500)	13.31 (.524)	75	10.16 (.400)	19.05 (.750)
15.24 (.600)	15.85 (.624)	15.88 (.625)	16.48 (.649)	13.34 (.525)	13.94 (.549)	13.97 (.550)	14.58 (.574)	80		20.32 (.800)
16.51 (.650)	17.12 (.674)	17.15 (.675)	17.75 (.699)	14.61 (.575)	15.21 (.599)	15.24 (.600)	15.85 (.624)	85	12.70 (.500)	21.59 (.850)
17.78 (.700)	18.39 (.724)	18.42 (.725)	19.02 (.749)	15.88 (.625)	16.48 (.649)	16.51 (.650)	17.12 (.674)	90		22.86 (.900)
19.05 (.750)	19.66 (.774)	19.69 (.775)	20.29 (.799)	17.15 (.675)	17.75 (.699)	17.78 (.700)	18.39 (.724)	95	15.24 (.600)	24.13 (.950)
20.32 (.800)	20.93 (.824)	20.96 (.825)	21.56 (.849)	18.42 (.725)	19.02 (.749)	19.05 (.750)	19.66 (.774)	100		25.40 (1.00)

Flush



Standard



H Head style

- AJ Slot
- ASHJ Hex recess
- APRJ Phillips recess
- FJ Flush slot
- AJW Wing head
- BJR Ring head

K Length

Enter number from selection table on below

M Material

- SS Stainless steel
- Omit for steel, zinc plated

D4 - H 4 - K M

Stud Length Table

C				K	U	L
TMT Range For: Clip-On Receptacle D4-SL4-305		TMT Range For: Clip-On Receptacle D4-SL4-280				
Min.	Max.	Min.	Max.			
~	~	~	~	25	1.91 (.075)	6.35 (.250)
~	~	1.17 (.046)	1.78 (.070)	30	2.54 (.100)	7.62 (.300)
1.80 (.071)	2.41 (.095)	2.44 (.096)	3.05 (.120)	35	3.81 (.150)	8.89 (.350)
3.07 (.121)	3.68 (.145)	3.71 (.146)	4.32 (.170)	40	5.08 (.200)	10.16 (.400)
4.34 (.171)	4.95 (.195)	4.98 (.196)	5.59 (.220)	45	5.72 (.225)	11.43 (.450)
5.61 (.221)	6.22 (.245)	6.25 (.246)	6.86 (.270)	50	6.35 (.250)	12.70 (.500)
6.88 (.271)	7.49 (.295)	7.52 (.296)	8.13 (.320)	55	6.99 (.275)	13.97 (.550)
8.15 (.321)	8.76 (.345)	8.79 (.346)	9.40 (.370)	60	7.62 (.300)	15.24 (.600)
9.42 (.371)	10.03 (.395)	10.06 (.396)	10.67 (.420)	65	8.89 (.350)	16.51 (.650)
10.69 (.421)	11.30 (.445)	11.33 (.446)	11.94 (.470)	70		17.78 (.700)
11.96 (.471)	12.57 (.495)	12.60 (.496)	13.21 (.520)	75	10.16 (.400)	19.05 (.750)
13.23 (.521)	13.84 (.545)	13.87 (.546)	14.48 (.570)	80		20.32 (.800)
14.50 (.571)	15.11 (.595)	15.14 (.596)	15.75 (.620)	85	12.7 (.500)	21.59 (.850)
15.77 (.621)	16.38 (.645)	16.41 (.646)	17.02 (.670)	90		22.86 (.900)
17.04 (.671)	17.65 (.695)	17.68 (.696)	18.29 (.720)	95	15.24 (.600)	24.13 (.950)
18.31 (.721)	18.92 (.745)	18.95 (.746)	19.56 (.770)	100		25.40 (1.00)

Stud Length Table

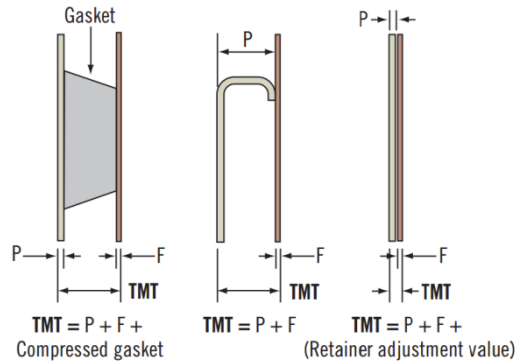
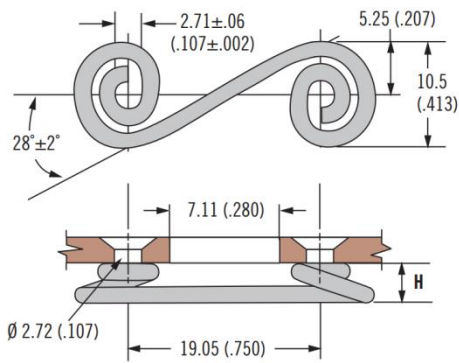
D			K	U	L
TMT Range For: Snap-In - Rear Mount Receptacle D4-SQC4-F					
Min.	Max.	D4-GP4B			
0.48 (.019)	1.09 (.043)	None	45	5.72 (.225)	11.43 (.450)
1.12 (.044)	1.73 (.068)	One	50	6.35 (.250)	12.70 (.500)
1.75 (.069)	2.36 (.093)	None	50		
2.39 (.094)	3.00 (.118)	One	55	6.99 (.275)	13.97 (.550)
3.02 (.119)	3.63 (.143)	None	55		
3.66 (.144)	4.27 (.168)	One	60	7.62 (.300)	15.24 (.600)
4.29 (.169)	4.90 (.193)	None	60		
4.93 (.194)	5.54 (.218)	One	65	8.89 (.350)	16.51 (.650)
5.56 (.219)	6.17 (.243)	None	65		
6.20 (.244)	6.81 (.268)	One	70	10.16 (.400)	17.78 (.700)
6.83 (.269)	7.44 (.293)	None	70		
7.47 (.294)	8.08 (.318)	One	75	19.05 (.750)	19.05 (.750)
8.10 (.319)	8.71 (.343)	None	75		
8.74 (.344)	9.35 (.368)	One	80	20.32 (.800)	20.32 (.800)
9.37 (.369)	9.98 (.393)	None	80		

D4 DZUS® Standard Line Quarter-Turn Fasteners

Receptacles - Size 4



Rivet-On

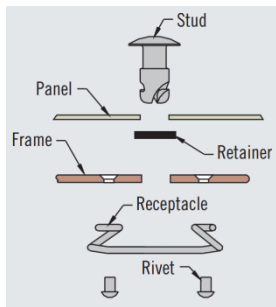


Material

- Steel, zinc plated or stainless steel

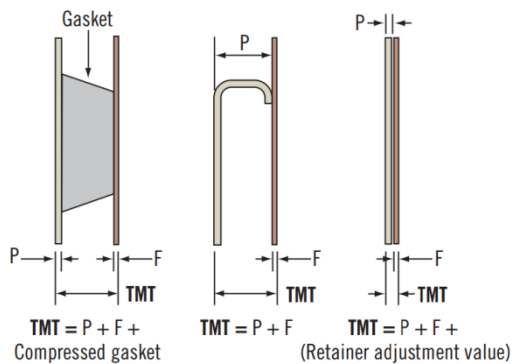
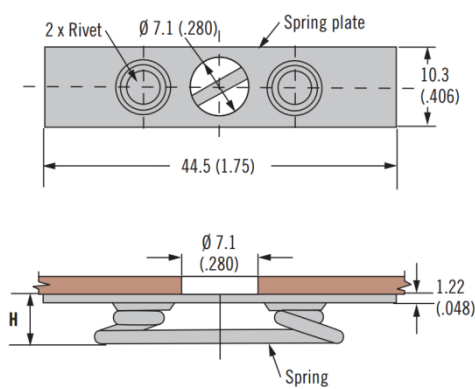
Notes

- Utilize stud selection column indicated when choosing a stud length from the D4 DZUS® Standard Line Quarter-Turn Fasteners stud length table. Contact Gripwell for stud length table.



Part Number		H	Stud Selection Column
Steel	Stainless Steel		
D4-S4-200	D4-S4-200SS	5.08 (.200)	A
D4-S4-225	D4-S4-225SS	5.72 (.225)	

Weld-On

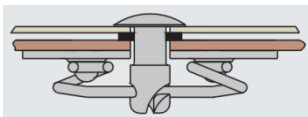


Material

- Steel, zinc plated or stainless steel

Notes

- Utilize stud selection column indicated when choosing a stud length from the D4 DZUS® Standard Line Quarter-Turn Fasteners stud length table. Contact Gripwell for stud length table.

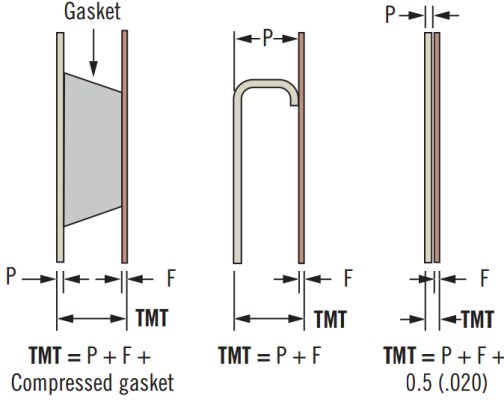
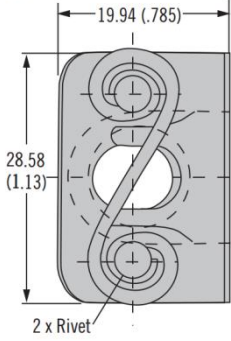


Part Number		H	Stud Selection Column
Steel	Stainless Steel		
D4-X485-275	D4-X485-275SS	6.98 (.275)	B
D4-X485-300	D4-X485-300SS	7.62 (.300)	

D4 DZUS® Standard Line Quarter-Turn Fasteners

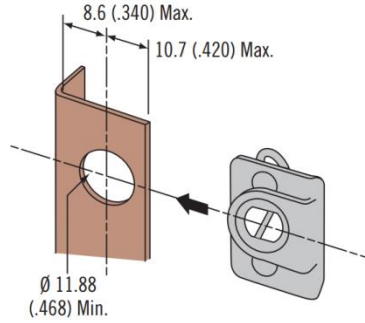
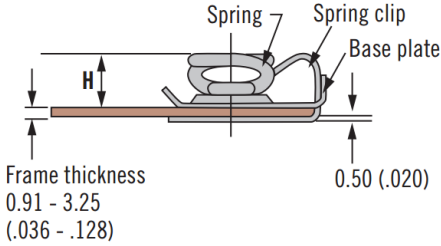
Receptacles - Size 4

Clip-On



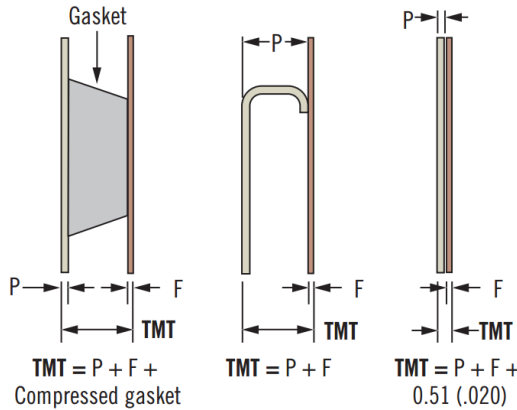
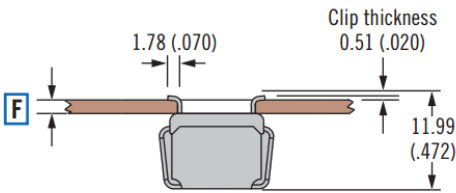
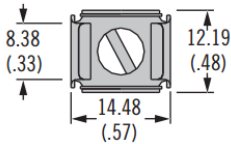
Material
• Steel, zinc plated

Notes
• Utilize stud selection column indicated when choosing a stud length from the D4 DZUS® Standard Line Quarter-Turn Fasteners stud length table. Contact Gripwell for stud length table.



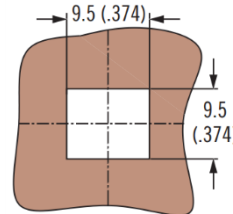
Part Number	H	Stud Selection Column
D4-SL4-280	7.11 (.280)	C
D4-SL4-305	7.75 (.305)	

Snap-In – Rear Mount



Material
• Steel, zinc plated

Notes
• For stud retention use only retaining ring part number: D4-RR4
• Utilize stud selection column indicated when choosing a stud length from the D4 DZUS® Standard Line Quarter-Turn Fasteners stud length table. Contact Gripwell for stud length table.



Part Number	F Frame Thickness	H	Stud Selection Column
D4-SQC4-16	0.78 - 1.42 (.031 - .056)	11.48 (.452)	D
D4-SQC4-20	1.47 - 1.98 (.058 - .078)	11.48 (.452)	
D4-SQC4-25	2 - 2.49 (.079 - .098)	11.48 (.452)	
D4-SQC4-30	2.59 - 3.18 (.102 - .125)	11.48 (.452)	

southco®

We are proud to be Southco's authorized distributor of over 20 years

D4 DZUS® Standard Line Quarter-Turn Fasteners

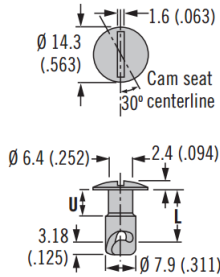
Stud selection - Size 5

Material

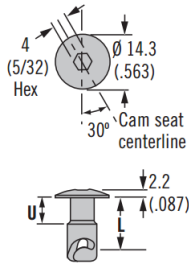
- Steel, zinc plated or stainless steel

H Head Styles - Tool Actuated

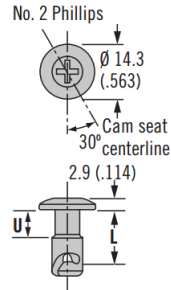
Slot



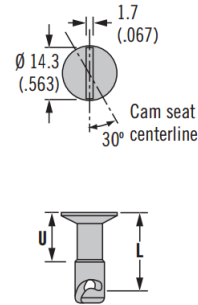
Hex Recess



Phillips Recess

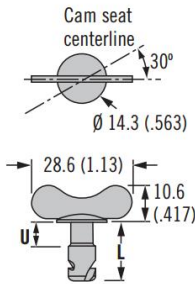


Flush slot

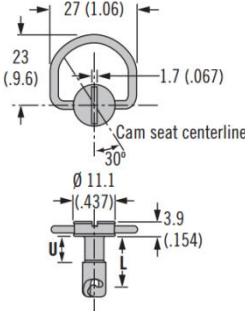


H Head Styles - Hand Actuated

Wing



Bail



To select correct fastener:

- Select receptacle**
 - Choose a receptacle from D4 DZUS® Standard Line Quarter-Turn Fasteners range
- Select retainer and accessories**
 - Choose from D4 DZUS® Standard Line Quarter-Turn Fasteners range and note any adjustment value
- Specify stud length**
 - Calculate the total material thickness (TMT) using the formula given for the selected receptacle
 - Find the range of TMT using the stud length selection table (left, and next page) using the column (A, B, or C) given for the selected receptacle, find **K**
- Complete the stud part number**
 - By specifying the head style **H**, stud length **K**, and material **M**
 - Example:
 - For rivet-on with base receptacle D4-S5-225, use column A
 - For TMT value calculated as 5.21, K = 40
 - For slotted head style in steel material, completed part number: D4-AJ5-40

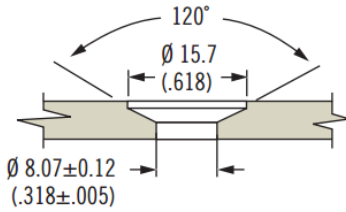
Stud Length Table										
A				B				U	L	K
TMT Range For: Rivet-On Receptacle D4-S5-225		TMT Range For: Rivet-On Receptacle D4-S5-200		TMT Range For: Weld-On Receptacle D4-X414-310		TMT Range For: Weld-On Receptacle D4-X414-285				
Min.	Max.	Min.	Max.	Min.	Max.	Min.	Max.			
2.67 (.105)	3.28 (.129)	3.3 (.13)	3.91 (.154)	~	~	~	~	3.18 (.125)	7.62 (.300)	30
3.94 (.155)	4.55 (.179)	4.57 (.18)	5.18 (.204)	1.65 (.065)	2.26 (.089)	2.29 (.09)	2.9 (.114)	4.83 (.200)	8.89 (.350)	35
5.21 (.205)	5.82 (.229)	5.84 (.23)	6.45 (.254)	2.92 (.115)	3.53 (.139)	3.56 (.14)	4.17 (.164)	10.16 (.400)	10.16 (.400)	40
6.48 (.255)	7.09 (.279)	7.11 (.28)	7.72 (.304)	4.19 (.165)	4.8 (.189)	4.83 (.19)	5.44 (.214)	11.43 (.450)	11.43 (.450)	45
7.75 (.305)	8.36 (.329)	8.38 (.33)	8.99 (.354)	5.46 (.215)	6.07 (.239)	6.1 (.24)	6.71 (.264)	6.35 (.250)	12.70 (.500)	50
9.02 (.355)	9.63 (.379)	9.65 (.38)	10.26 (.404)	6.73 (.265)	7.34 (.289)	7.37 (.29)	7.98 (.314)	6.99 (.275)	13.97 (.550)	55
10.29 (.405)	10.9 (.429)	10.92 (.43)	11.53 (.454)	8.00 (.315)	8.61 (.339)	8.64 (.34)	9.25 (.364)	7.62 (.300)	15.24 (.600)	60
11.56 (.455)	12.17 (.479)	12.19 (.48)	12.8 (.504)	9.27 (.365)	9.88 (.389)	9.91 (.39)	10.52 (.414)	8.89 (.350)	16.51 (.650)	65
12.83 (.505)	13.44 (.529)	13.46 (.53)	14.07 (.554)	10.54 (.415)	11.15 (.439)	11.18 (.44)	11.79 (.464)	10.16 (.400)	17.78 (.700)	70
14.1 (.555)	14.71 (.579)	14.73 (.58)	15.34 (.604)	11.81 (.465)	12.42 (.489)	12.45 (.49)	13.06 (.514)	15.24 (.600)	19.05 (.750)	75
15.37 (.605)	15.98 (.629)	16.00 (.63)	16.61 (.654)	13.08 (.515)	13.69 (.539)	13.72 (.54)	14.33 (.564)	12.7 (.500)	20.32 (.800)	80
16.64 (.655)	17.25 (.679)	17.27 (.68)	17.88 (.704)	14.35 (.565)	14.96 (.589)	14.99 (.59)	15.6 (.614)	15.24 (.600)	21.59 (.850)	85
17.91 (.705)	18.52 (.729)	18.54 (.73)	19.15 (.754)	15.62 (.615)	16.23 (.639)	16.26 (.64)	16.87 (.664)	17.78 (.700)	22.86 (.900)	90
19.18 (.755)	19.79 (.779)	19.81 (.78)	20.42 (.804)	16.89 (.665)	17.5 (.689)	17.53 (.69)	18.14 (.714)	15.24 (.600)	24.13 (.950)	95
20.45 (.805)	21.06 (.829)	21.08 (.83)	21.69 (.854)	18.16 (.715)	18.77 (.739)	18.8 (.74)	19.41 (.764)	17.78 (.700)	25.40 (1.00)	100

Notes

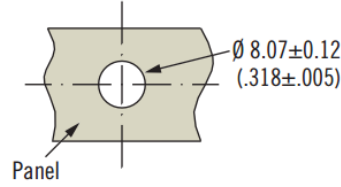
- Stainless steel material may require a higher minimum order quantity



Flush



Standard



H Head style

- AJ Slot
- ASHJ Hex recess
- APRJ Phillips recess
- FJ Flush slot
- AJW Wing head
- BJR Bail head

K Length

Enter number from selection table below

M Material

SS Stainless steel
Omit for steel, zinc plated

D4 - H 5 - K M

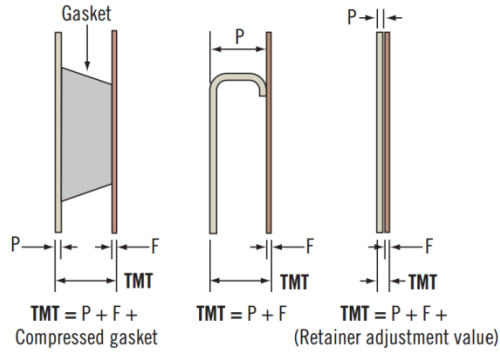
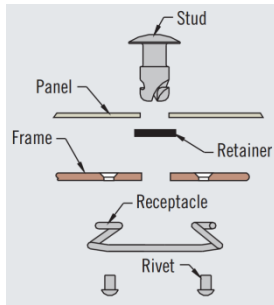
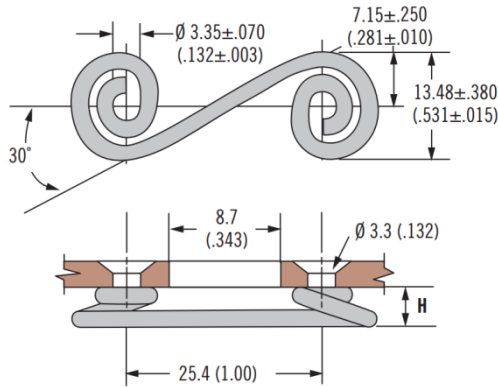
Stud Length Table

C				U	L	K
TMT Range For: Clip-On Receptacle D4-SL5-305		TMT Range For: Clip-On Receptacle D5-SL5-280				
Min.	Max.	Min.	Max.			
~	~	1.17 (.046)	1.78 (.07)	3.18 (.125)	7.62 (.300)	30
1.8 (.071)	2.41 (.095)	2.44 (.096)	3.05 (.12)		8.89 (.350)	35
3.07 (.121)	3.68 (.145)	3.71 (.146)	4.32 (.17)	4.83 (.200)	10.16 (.400)	40
4.34 (.171)	4.95 (.195)	4.98 (.196)	5.59 (.22)		11.43 (.450)	45
5.61 (.221)	6.22 (.245)	6.25 (.246)	6.86 (.27)	6.35 (.250)	12.70 (.500)	50
6.88 (.271)	7.49 (.295)	7.52 (.296)	8.13 (.32)	6.99 (.275)	13.97 (.550)	55
8.15 (.321)	8.76 (.345)	8.79 (.346)	9.4 (.37)	7.62 (.300)	15.24 (.600)	60
9.42 (.371)	10.03 (.395)	10.06 (.396)	10.67 (.42)	8.89 (.350)	16.51 (.650)	65
10.69 (.421)	11.3 (.445)	11.33 (.446)	11.94 (.47)	10.16 (.400)	17.78 (.700)	70
11.96 (.471)	12.57 (.495)	12.6 (.496)	13.21 (.52)		19.05 (.750)	75
13.23 (.521)	13.84 (.545)	13.87 (.546)	14.48 (.57)	12.7 (.500)	20.32 (.800)	80
14.5 (.571)	15.11 (.595)	15.14 (.596)	15.75 (.62)		21.59 (.850)	85
15.77 (.621)	16.38 (.645)	16.41 (.646)	17.02 (.67)	15.24 (.600)	22.86 (.900)	90
17.04 (.671)	17.65 (.695)	17.68 (.696)	18.29 (.72)		24.13 (.950)	95
18.31 (.721)	18.92 (.745)	18.95 (.746)	19.56 (.77)	17.78 (.70)	25.40 (1.00)	100

D4 DZUS® Standard Line Quarter-Turn Fasteners

Receptacles - Size 5

Rivet-On



Material

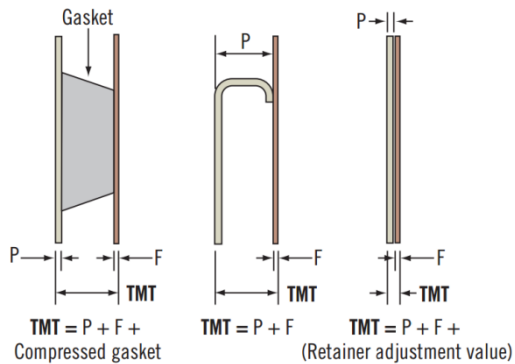
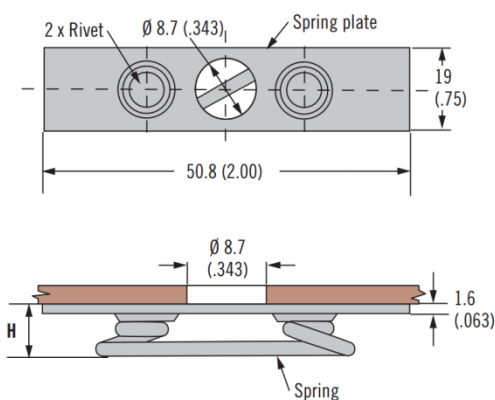
- Steel, zinc plated or stainless steel

Notes

- Utilize stud selection column indicated when choosing a stud length from the D4 DZUS® Standard Line Quarter-Turn Fasteners stud length table. Contact Gripwell for stud length table.

Part Number		H	Stud Selection Column
Steel	Stainless Steel		
D4-S5-200	D4-S5-200SS	5.08 (.200)	A
D4-S5-225	D4-S5-225SS	5.72 (.225)	

Weld-On



Material

- Steel, zinc plated or stainless steel

Notes

- Utilize stud selection column indicated when choosing a stud length from the D4 DZUS® Standard Line Quarter-Turn Fasteners stud length table. Contact Gripwell for stud length table.

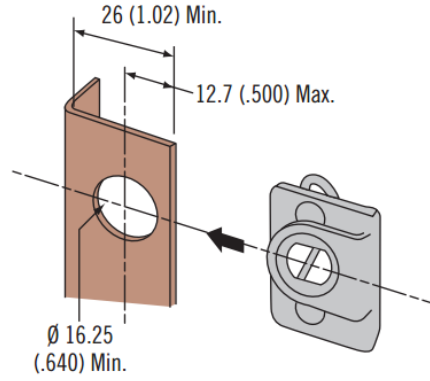
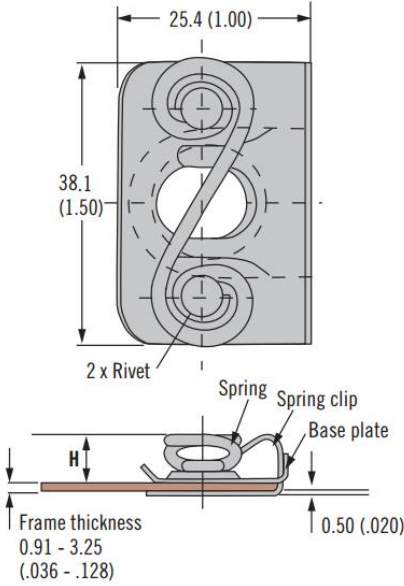
Part Number		H	Stud Selection Column
Steel	Stainless Steel		
D4-X414-285	D4-X414-285SS	7.2 (.285)	B
D4-X414-310	D4-X414-310SS	7.9 (.310)	

D4 DZUS® Standard Line Quarter-Turn Fasteners

Receptacles - Size 5



Clip-On



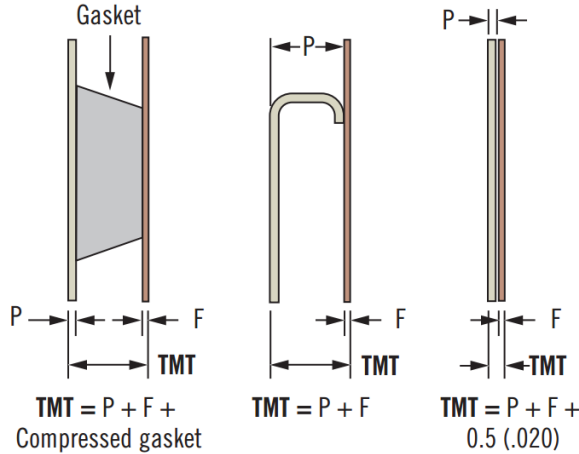
Note:
Panel misalignment can be tolerated by increasing the support hole to 17.86 (.703) and decreasing the hole center to edge distance to 11.43 (.450)

Material

- Steel, zinc plated

Notes

- Utilize stud selection column indicated when choosing a stud length from the D4 DZUS® Standard Line Quarter-Turn Fasteners stud length table. Contact Gripwell for stud length table.



Part Number	H	Stud Selection Column
D4-SL5-280	7.11 (.280)	c
D4-SL5-305	7.75 (.305)	

D4 DZUS® Standard Line Quarter-Turn Fasteners

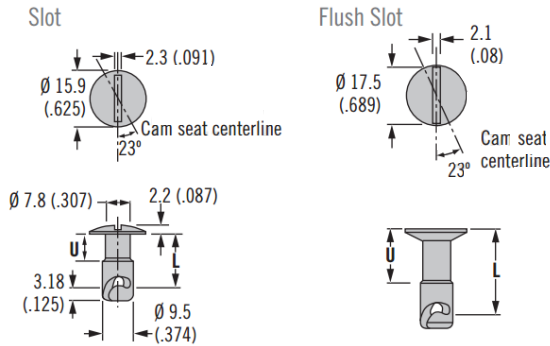
Stud selection - Size 6



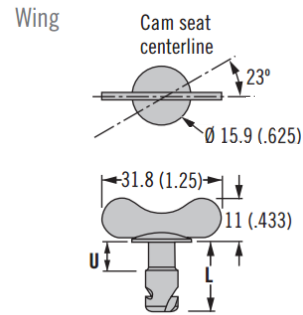
Material

- Steel, zinc plated or stainless steel

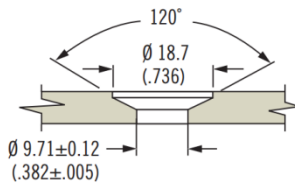
H Head Styles - Tool Actuated



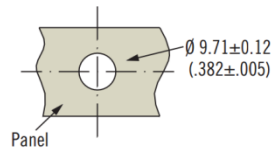
H Head Styles - Hand Actuated



Flush



Standard



Stud Length Table

A		B				U	L	K		
TMT Range For: Rivet-On Receptacle D4-S6-300	TMT Range For: Rivet-On Receptacle D4-S6-275	TMT Range For: Weld-On Receptacle D4-X441-335	TMT Range For: Weld-On Receptacle D4-X441-310							
Min.	Max.	Min.	Max.	Min.	Max.	Min.	Max.			
2.29 (.090)	2.90 (.114)	2.92 (.115)	3.53 (.139)	1.40 (.055)	2.01 (.079)	2.03 (.080)	2.64 (.104)	4.45 (.175)	8.89 (.350)	35
3.56 (.140)	4.17 (.164)	4.19 (.165)	4.80 (.189)	2.67 (.105)	3.28 (.129)	3.30 (.130)	3.91 (.154)	5.08 (.200)	10.16 (.400)	40
4.83 (.190)	5.44 (.214)	5.46 (.215)	6.07 (.239)	3.94 (.155)	4.55 (.179)	4.57 (.180)	5.18 (.204)	5.72 (.225)	11.43 (.450)	45
6.10 (.240)	6.71 (.264)	6.73 (.265)	7.34 (.289)	5.21 (.205)	5.82 (.229)	5.84 (.230)	6.45 (.254)	6.35 (.250)	12.70 (.500)	50
7.37 (.290)	7.98 (.314)	8.00 (.315)	8.61 (.339)	6.48 (.255)	7.09 (.279)	7.11 (.280)	7.72 (.304)	6.99 (.275)	13.97 (.550)	55
8.64 (.340)	9.25 (.364)	9.27 (.365)	9.88 (.389)	7.75 (.305)	8.36 (.329)	8.38 (.330)	8.99 (.354)	7.62 (.300)	15.24 (.600)	60
9.91 (.390)	10.52 (.414)	10.54 (.415)	11.15 (.439)	9.02 (.355)	9.63 (.379)	9.65 (.380)	10.26 (.404)	8.89 (.350)	16.51 (.650)	65
11.18 (.440)	11.79 (.464)	11.81 (.465)	12.42 (.489)	10.29 (.405)	10.90 (.429)	10.92 (.430)	11.53 (.454)		17.78 (.700)	70
12.45 (.490)	13.06 (.514)	13.08 (.515)	13.69 (.539)	11.56 (.455)	12.17 (.479)	12.19 (.480)	12.80 (.504)	10.16 (.400)	19.05 (.750)	75
13.72 (.540)	14.33 (.564)	14.35 (.565)	14.96 (.589)	12.83 (.505)	13.44 (.529)	13.46 (.530)	14.07 (.554)	11.43 (.450)	20.32 (.800)	80
14.99 (.590)	15.60 (.614)	15.62 (.615)	16.23 (.639)	14.10 (.555)	14.71 (.579)	14.73 (.580)	15.34 (.604)	12.7 (.500)	21.59 (.850)	85
16.26 (.640)	16.87 (.664)	16.89 (.665)	17.50 (.689)	15.37 (.605)	15.98 (.629)	16.00 (.630)	16.61 (.654)	13.97 (.550)	22.86 (.900)	90
17.53 (.690)	18.14 (.714)	18.16 (.715)	18.77 (.739)	16.64 (.655)	17.25 (.679)	17.27 (.680)	17.88 (.704)	15.24 (.600)	24.13 (.950)	95
18.80 (.740)	19.41 (.764)	19.43 (.765)	20.04 (.789)	17.91 (.705)	18.52 (.729)	18.54 (.730)	19.15 (.754)	16.51 (.650)	25.40 (1.00)	100

- H** Head style
- AJ Slot recess
- AJW Wing head
- FJ Flush slot

K Length
Enter number from selection table below

- M** Material
- SS Stainless steel
- Omit for steel, zinc plated

D4 - **H** 6 - **K** **M**

Notes

- Stainless steel material may require a higher minimum order quantity

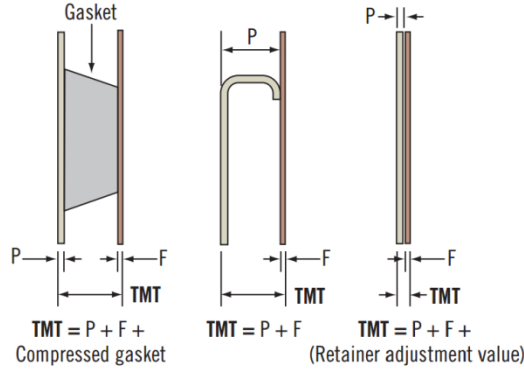
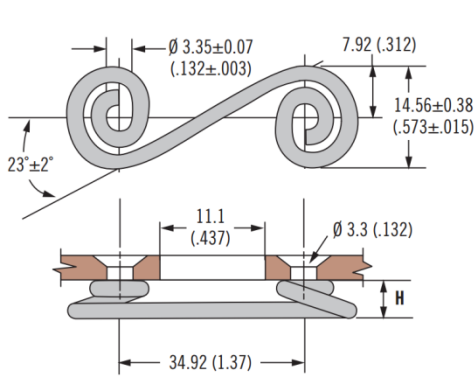
To select correct fastener:

- Select receptacle**
 - Choose a receptacle from D4 DZUS® Standard Line Quarter-Turn Fasteners range
- Select retainer and accessories**
 - Choose from D4 DZUS® Standard Line Quarter-Turn Fasteners range and note any adjustment value
- Specify stud length**
 - Calculate the total material thickness (TMT) using the formula given for the selected receptacle
 - Find the range of TMT using the stud length selection table (left) using the column (A or B) given for the selected receptacle, find **K**
- Complete the stud part number**
 - By specifying the head style **H**, stud length **K**, and material **M**
 - Example:
 - For rivet-on with base receptacle D4-S6-300, use column A
 - For TMT value calculated as 5.2, K = 45
 - For slotted head style in steel material, completed part number: D4-AJ6-45

D4 DZUS® Standard Line Quarter-Turn Fasteners

Receptacles - Size 6

Rivet-On

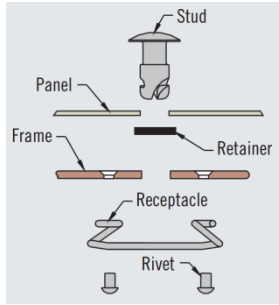


Material

- Steel, zinc plated or stainless steel

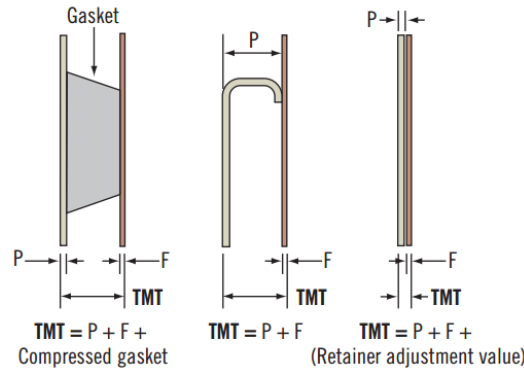
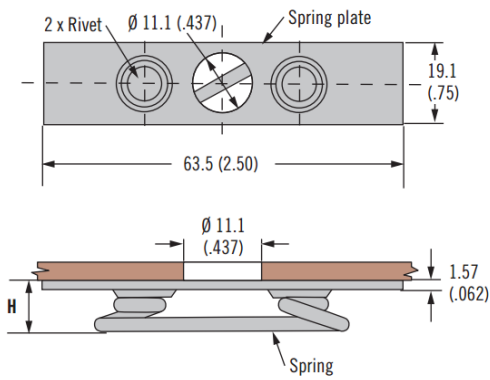
Notes

- Utilize stud selection column indicated when choosing a stud length from the D4 DZUS® Standard Line Quarter-Turn Fasteners stud length table. Contact Gripwell for stud length table.



Part Number		H	Stud Selection Column
Steel	Stainless Steel		
D4-S6-275	D4-S6-275SS	6.99 (.275)	A
D4-S6-300	D4-S6-300SS	7.62 (.300)	

Weld-On

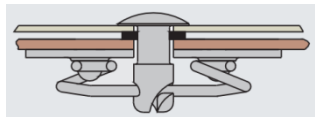


Material

- Steel, zinc plated

Notes

- Utilize stud selection column indicated when choosing a stud length from the D4 DZUS® Standard Line Quarter-Turn Fasteners stud length table. Contact Gripwell for stud length table.



Part Number	H	Stud Selection Column
D4-X441-310	7.87 (.310)	B
D4-X441-335	8.51 (.335)	

We are proud to be Southco's authorized distributor of over 20 years

southco®